

What's In The Box

- [1] IDC-3120 Camera unit
- [2] USB cable
- [3] Program CD. The serial number of your software license is printed on the CD sleeve.
- [4] Quick Guide



Connecting To The Computer

- [1] Connect the camera to the computer with the USB cable
- [2] Click on "VP-EYE Document" to launch the program.
- [3] You will now be able to scan documents, switch to presentation mode and use other features of the software.



Web resources

Program download / upgrade: <http://www.versaview.com/download.htm>

Technical support: cs@versaview.com

Product information: info@versaview.com

QUICK GUIDE

IDC-3120

USB Document Camera & Visualizer



The VersaView logo, featuring the brand name in a stylized font with a red and black graphic element.



Quick Installation Guide of VP-EYE Software for the VersaView IDC-3120 Camera

[1] Have the serial number of your software license in hand. It is printed on the CD sleeve.

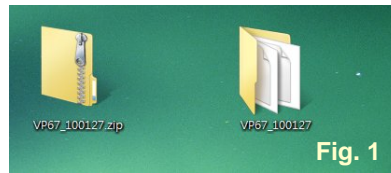


Fig. 1

[2] Insert the CD into your computer. Or, you may download the most current version of the software (VP-EYE Document) from our website at: www.versaview.com/download.htm

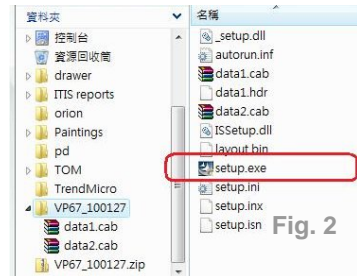


Fig. 2

[3] Unzip the downloaded file (Fig. 1)

[4] Open the VP67_xxxx folder and run "setup.exe". (Fig. 2)

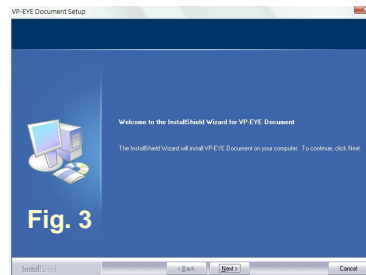


Fig. 3

[5] To continue the installation process press "next". (Fig. 3)

[6] To accept the license agreement mark "accept" and click "Next". (Fig. 4)

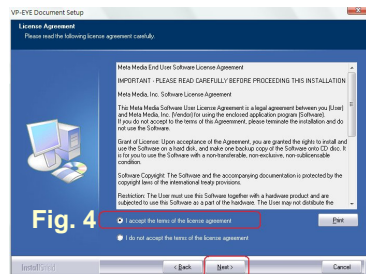


Fig. 4

[7] Type the user name, company name and serial number, then click "Next". (Fig. 5)

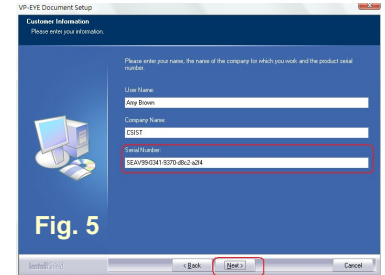


Fig. 5

[8] Select the program folder, then "Next". (Fig. 6)

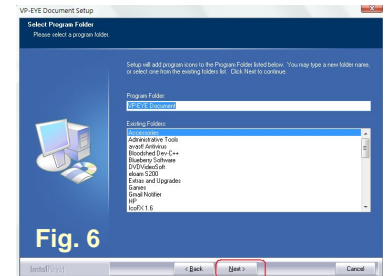


Fig. 6

[9] Installation proceeds (Fig. 7). When complete (Fig. 8), click "Finish". A "VP-EYE Document" icon appears on the desktop (Fig. 9). Now you are ready to begin using the IDC-3120 camera.

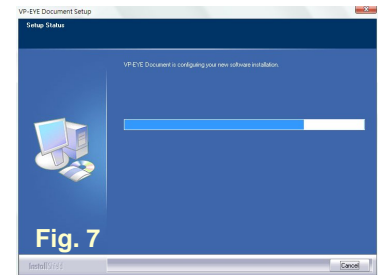


Fig. 7

After connecting the camera to the computer with the USB cable, click on "VP-EYE Document" to launch the program. You will now be able to scan documents, switch to presentation mode and use other features of the software.

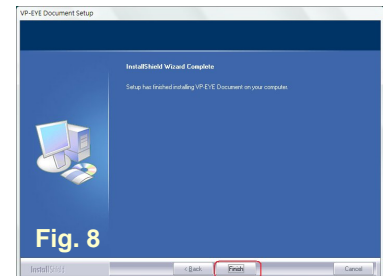


Fig. 8

###

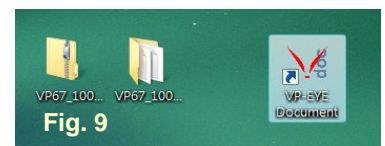


Fig. 9